

EOS 5D Mark II

Canon

Delighting You Always

Canon

SOUTH & SOUTHEAST ASIA
REGIONAL HEADQUARTERS

Canon Singapore Pte. Ltd.

1 HarbourFront Avenue
#04-01 Keppel Bay Tower
Singapore 098632

Tel: 65-6799-8888
Fax: 65-6221-7577

www.canon-asia.com

Bangladesh

J.A.N. Associates
Tel: 880-2-8611444
Fax: 880-2-8610410

Brunei

Interhouse Company
Tel: 673-2-653001
Fax: 673-2-653003

Cambodia

Royal Cambodia Co. Ltd.
Tel: 855-23-428955
Fax: 855-23-722961

India

Canon India Pvt. Ltd.
Tel: 91-124-4160000
Fax: 91-124-4160011
www.canon.co.in

Indonesia

P.T. Datascrip
Tel: 62-21-6544515
Fax: 62-21-6544811
www.canon.co.id

Malaysia

Canon Marketing (Malaysia)
Sdn. Bhd.
Tel: 60-3-78446000
Fax: 60-3-78450505
www.canon.com.my

Maldives

SIMDI Company Pte. Ltd.
Tel: 960-3334421
Fax: 960-3334424

Myanmar

Accel International
Company Ltd.
Tel: 95-1-202092/3/4
Fax: 95-1-202079

Nepal

Primax International Inc.
Tel: 977-1-4424079
Fax: 977-1-4429358

Pakistan

Mega Business Machine
Tel: 92-21-2276926-8
Fax: 92-21-2276930

Philippines

Canon Marketing
(Philippines) Inc.
Tel: 63-2-8849000
Fax: 63-2-8109797
www.canon.com.ph

Singapore

Canon Singapore Pte. Ltd.
Domestic Operations
Tel: 65-6799-8888
Fax: 65-6221-7577
www.canon.com.sg

Sri Lanka

Homebase Electronics
(Pvt) Ltd
Tel: 94-11-2437797
Fax: 94-11-2448980

Thailand

Canon Marketing
(Thailand) Co. Ltd.
Tel: 66-2-3449999
Fax: 66-2-3449967
www.canon.co.th

Vietnam

Canon Singapore Pte. Ltd.
Ho Chi Minh City Representative
Office & Showroom
Tel: 84-8-8200466
Fax: 84-8-8200477

Hanoi Representative Office
Tel: 84-4-7711677
Fax: 84-4-7711678
www.canon.com.vn

A Legend Reborn.



A Legend Reborn.



Full-frame photography. The mere mention of it brings to mind a status of prestige. This all changed in 2005—the year Canon released a full-frame DSLR camera for the masses. Called the EOS 5D, its remarkable image quality and versatility established it as a top quality DSLR and garnered a tremendous following. This was a camera that anyone with a passion for photography desired to own.

Today, Canon has changed the name of the game again. Introducing the EOS 5D Mark II, a camera that absolutely changes the way anyone will look at a DSLR. Headlined by a mind-blowing 21.1-megapixel full-frame CMOS sensor and the latest state-of-the-art DIGIC 4 image processor, it is loaded with advanced features such as Live View Shooting and the EOS Integrated Cleaning System. It can also record Full HD 1080p videos for times when images just aren't enough. How's that for rewriting the rules?

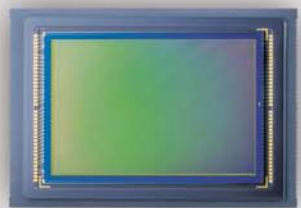
Flawless integration with the complete EOS system of over 60 lenses and dozens of accessories further gives you unlimited freedom to capture endlessly amazing images. Truly a worthy successor to its namesake, this is the Canon EOS 5D Mark II.

Now it's time to create your own legacy.

A Legend

21.1 million pixels of pure perfection.

No expense was spared to make this camera the epitome of perfection, unrivalled in its class. At the centre of its superiority is the magnificent **21.1-megapixel full-frame CMOS sensor**. Measuring 36mm by 24mm, this high-sensitivity single-plate sensor has dimensions similar to that of a single 35mm film negative. With a significantly larger surface area, the CMOS sensor is able to capture more of the scene in a single frame with an ultra-high image quality no less. So whether you're shooting portraiture or landscapes, you're guaranteed excellent levels of detail and sharpness.



Only one image processor can handle the demands of the EOS 5D Mark II's powerful CMOS sensor. And that's the revolutionary Canon **DIGIC 4 image processor**. Now into its fourth generation, DIGIC 4 offers blazingly fast image-rendering speeds while still retaining fine detail and natural colour reproduction. And because DIGIC 4 employs a **14-bit A/D conversion process**, every image from the camera has excellent gradation expression that looks amazingly lifelike.



Whether in extremely bright or dark situations, the EOS 5D Mark II can adapt to them effortlessly with its impeccable ISO performance. At a basic **ISO range of 100 - 6400**, ISO speed can be further **extended to ISO 50, 12800 and 25600** - the widest among EOS DIGITAL cameras. Even though the camera's CMOS sensor is already effective at suppressing noise, an additional **noise reduction** function (with three settings) is provided for those who expect nothing less than images with crystal clear clarity.

| | | | | | |
|------|------|------|------|------|------|
| Auto | 100 | 125 | 160 | 200 | 250 |
| | 320 | 400 | 500 | 640 | 800 |
| | 1000 | 1250 | 1600 | 2000 | 2500 |
| | 3200 | 4000 | 5000 | 6400 | |

EV -2..1..0..1..2



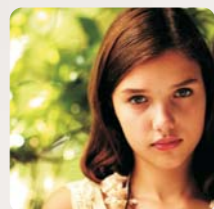
Flawless images yours to create.

Get the most out of the EOS 5D Mark II's exceptional imaging performance with a variety of options that help you achieve that perfect shot.

Picture Style lets you imbue your images with a desired effect that matches your photographic expression or subject. Choose from Standard, Portrait, Landscape, Neutral, Faithful or Monochrome. You can also download additional Picture Styles from the Canon website or create your very own with the included **Picture Style Editor** software.



Standard



Portrait



Landscape



Neutral



Faithful



Monochrome

A trio of inventive functions found in the EOS 5D Mark II ensure your images are as close to what you see with your own eyes. First up is **Highlight Tone Priority**. By expanding the dynamic range within highlighted areas, this function prevents images shot in very bright light from appearing washed out. As a result, colour rendition is more lifelike and the overall image looks more pleasing to the eye.



Without Highlight Tone Priority

With Highlight Tone Priority

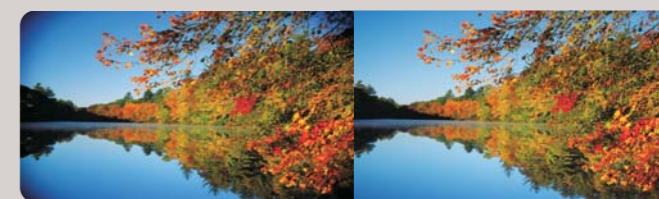
When shooting in less than ideal lighting conditions, the **Auto Lighting Optimizer** can automatically adjust the brightness and contrast levels of your images to give you better results. It can also be used to brighten up the faces of subjects thanks to face detection technology. Choose from a Standard, Low or Strong setting for greater control.



Without Auto Lighting Optimizer

With Auto Lighting Optimizer

Finally, there's the new **Lens Peripheral Illumination Correction** function that ensures uniform exposure across the entire image — a feature extremely useful when shooting with wide angle or high-zoom lenses. Because each lens has different correction requirements, this data must be registered into the camera before it can be automatically carried out. The EOS 5D Mark II comes registered with correction data for 26 lenses and can store a total of 40 different lens correction data.



Without Lens Peripheral Illumination Correction

With Lens Peripheral Illumination Correction

Apart from the six different JPEG types, the EOS 5D Mark II provides **three RAW types** for you to choose from — RAW, sRAW1, and sRAW2. The sRAW1 and sRAW2 types are useful for photographers who want the versatility of RAW but do not need their images to be at the highest resolution. Any combination of RAW and JPEG types can be selected for **simultaneous RAW+JPEG recording**. The EOS 5D Mark II is also fully compatible with new **high-speed UDMA (Ultra Direct Memory Access) CompactFlash cards**, which allow for faster read/write performance.







Precision and performance in perfect balance.

Because perfect photographic moments can pass by in the blink of an eye, it's crucial to get it right the first time. To help you do this, the EOS 5D Mark II employs a high-precision **9-point AF sensor with 6 Assist AF points**. The cross-type centre AF point is vertical-line sensitive at f/2.8 and vertical and horizontal-line sensitive at f/5.6. The top and bottom Assist AF points at the centre are also vertical-line sensitive at f/2.8. A **light source detection function** automatically compensates for the slight focusing error caused by different light sources, and is especially effective for artificial light sources. For users who wish to modify the AF focusing precision, **AF micro adjustments** can also be made via the Custom Functions menu.



When you're shooting at a resolution of 21.1 million pixels, a **continuous shooting rate of 3.9 frames per second** is nothing short of incredible. You can easily capture fast-moving action without missing an ounce of detail. And thanks to the power of DIGIC 4, the EOS 5D Mark II can capture a **maximum burst of 78 in JPEG (Large/Fine) and 13 in RAW**. To ensure lasting performance for years to come, the camera's newly developed shutter has a **150,000-cycle durability** and has a **shutter speed range from 1/8000 to 30 secs., and X-sync at 1/200 sec.**



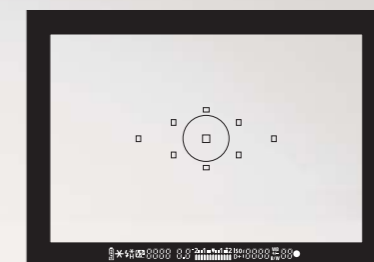
3.9 fps Continuous Shooting

For stunningly gorgeous exposure, the EOS 5D Mark II uses a **35-zone metering sensor** to detect lighting conditions. Available **metering modes** include evaluative, partial, spot, and centre-weighted. You also have the option of setting both the exposure compensation and auto exposure bracketing on the same screen, so you can easily see the overall result.



Evaluative Metering Partial Metering Spot Metering Centre-weighted Metering

What you see is what you get. Never has this rung more true than with the EOS 5D Mark II. Using newly designed optics, the camera's viewfinder is larger, clearer, and much easier on the eyes. It has a **coverage of approximately 98%** and can be fitted with a variety of **interchangeable focusing screens**. The detailed viewfinder information display has been updated to show ISO speed, indicators for highlight tone priority and monochrome mode, as well as a battery check display.

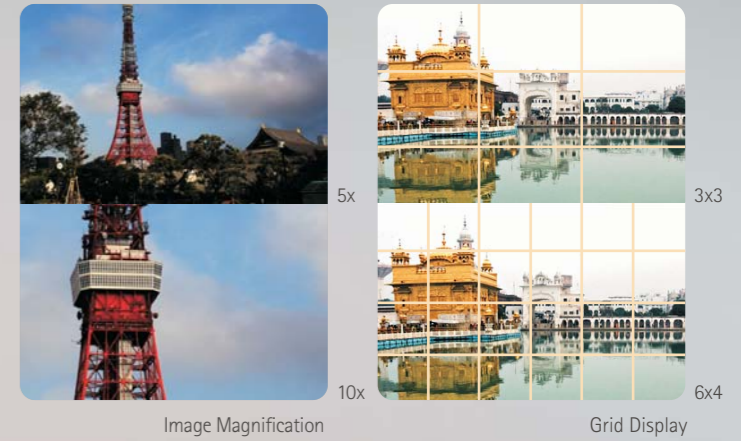


Unparalleled freedom with Live View Shooting.

Live View shooting gives photographers everywhere the ability to shoot in ways they never thought possible. Because you can now shoot using the EOS 5D Mark II's larger LCD screen, it extends the creative possibilities of a DSLR camera that were not available until now.

Live View shooting gives you **three Autofocus Modes** to choose from. In **Quick Mode**, Live View is momentarily interrupted as the camera lowers the mirror to achieve focus. In **Live Mode**, the camera reads focus and subject contrast right off the imaging sensor without any blackout or interruption of Live Viewing. And then there's the new **Live Face Detection Mode**, where the camera will focus on any face it detects. You can also use the multi-controller to select which face to focus on.

The LCD screen's versatility allows the camera to perform functions that enhance Live View Shooting. You can **enlarge the real-time on-screen image by 5x or 10x** for more meticulous focus verification. By automatically adjusting the brightness of the LCD screen, the camera can also **simulate different image exposure levels** in real-time. **Depth-of-field preview** and **grid displays** are also possible in Live View to help you achieve better image composition.



In environments such as classical concerts and stage performances, the EOS 5D Mark II's shutter charge sound can be reduced to prevent unnecessary noise when shooting. Choose from **two silent shooting modes**. In Mode 1, shutter sound is significantly reduced. It can also be used during continuous shooting. In Mode 2, shutter cocking only occurs when the shutter button is released halfway. This allows you to control the timing of the shutter charge sound.



With the EOS 5D Mark II, **Remote Live View Shooting** via a computer is also possible. By means of a USB or wireless connection, you can view a real-time image from the camera on your computer monitor. Having a much larger display to view your image is useful in situations where perfect focusing is absolutely critical.

High Definition movies that move you.

Immaculate images with the EOS Integrated Cleaning System.

Yes, it's true. While the EOS 5D Mark II's main focus is on still images, it does videos pretty well too. By harnessing the ingenuity that is Live View shooting, the EOS 5D Mark II is now able to record **Full HD (1920 x 1080) or standard definition video clips*** with an **excellent 30fps frame rate**. Clips are recorded in MOV format and use the MPEG-4 AVC video compression method to obtain image quality sufficient for viewing on high-resolution TV displays. And since the EOS 5D Mark II can be used with special lenses such as fisheye and macro lenses, you can achieve a variety of special effects. A **built-in microphone** is also provided for monaural sound recording when shooting videos.



More than just recording video clips, several functions are also available for use in movie recording mode. You can set Live View shooting AF mode, Picture Style, exposure compensation, as well as perform stereo recording via an external stereo microphone. The EOS 5D Mark II also lets you **capture still photos while recording video**. Simply press the shutter button, and the image is captured.

Thanks to the camera's 3" VGA resolution LCD screen, video playback is exquisitely sharp. Audio playback is through a **built-in speaker** located on the right of the viewfinder eyepiece and has **six adjustable volume levels**. Movie editing is also possible with the ZoomBrowser/ImageBrowser software found in the EOS DIGITAL Solution Disk.



Built-in Speaker

* Continuous recording duration based on standard 4GB card is approx. 12 min. for Full HD and approx. 24 min. for SD.



Let's face it. With interchangeable lens mounts, dust getting into the camera body is almost an inevitable thing. But that doesn't mean we have to live with it. Cue the **EOS Integrated Cleaning System** — a comprehensive set of anti-dust measures designed to keep your images crystal clear.

As the first line of defence, the EOS 5D Mark II's full-frame CMOS sensor's low-pass filter has a **fluorine coating** to make it more resistant to dust adhesion. The full-frame **Self Cleaning Sensor Unit** can also be called upon to shake off any dust particles stuck to it with ultrasonic vibrations. The camera's mirror can also be raised so a lens blower can be used to remove larger dust particles.



For sticky dust particles that refuse to go away, that's where the innovative **Dust Delete Function** comes in. It detects the location of these particles and appends the information to the image. When the images are loaded into the Canon Digital Photo Professional software, this data is used to automatically erase the resulting dust shadows in your images all at once.

With the EOS Integrated Cleaning System, every image shot with the EOS 5D Mark II comes out looking clear.



Before Dust Delete Function

After Dust Delete Function

Designed to inspire confidence.



Not content with simply capturing pixel perfect images, the EOS 5D Mark II has also been designed for maximum usability. But that's not all. The camera not only works like a dream, it looks like one too.

Powerfully contoured lines with a classy and elegant noir finish, this is a stunning camera that truly inspires confidence. Grip shape, buttons, and dials are optimally positioned for easy operation and better balance. With a stainless steel chassis and a magnesium alloy exterior, the camera body is strong and highly rigid but still manages to be lightweight. A dust-proof and drip-proof construction further allows the EOS 5D Mark II to withstand outdoor shooting conditions.



When you're shooting 21.1 million pixels, you'll want your images to turn out exactly the way you intended. The EOS 5D Mark II has an ultra-fine 3" Clear View LCD screen with a wide viewing angle of 170° that will satisfy all your viewing needs. With approximate 920,000 dots, this high-resolution LCD screen makes it easy to scrutinise every little detail. Because of the screen higher resolution, text and icons on the menu screen appear clearer and are more pleasing to the eye as well.

Dual anti-reflection coating makes it easy to see the screen even in bright light while the water-repellent coating reduces the occurrence of smudges. A light sensor is also provided to adjust LCD brightness level to suit the ambient light.

No more fumbling through multiple menus. The Quick Control screen feature offers you a new way of change key image settings intuitively in a single screen. For added convenience, you can change exposure compensation and AEB settings here as well.



Quick Control Screen

For purists who prefer using the LCD panel located at the top of the camera, the one on the EOS 5D Mark II has been made larger for better readability. ISO speed, D+ (highlight tone priority), remote control, and other indicators have also been added to provide more information when shooting.



LCD Panel

The EOS 5D Mark II includes a new Creative Auto (CA) mode. While its basic settings are based on Full Auto, CA mode gives users the added option of being able to change other frequently used settings on the fly. Changeable parameters include aperture value, exposure compensation, Picture Style, image-recording quality, and drive mode.



Creative Auto Screen

As with any EOS DIGITAL camera, there are several ways to personalise the EOS 5D Mark II to suit your own shooting style. Most of these options can be found in the camera's extensive Custom Functions menu (see Camera Specifications). In addition, the mode dial now allows you to store 3 sets of custom camera settings (C1, C2, C3) for instant recall. The My Menu feature also lets you register up to six frequently used menu items and Custom Functions for quick access.

Bring your masterpiece to life.

Nothing gives photographers more satisfaction than seeing their images in all their glory. Whether you're printing or viewing your images on a computer or TV, the EOS 5D Mark II allows you to do this effortlessly.

The EOS 5D Mark II's **USB 2.0 Hi-Speed interface** makes transferring images and video clips a relatively quick task. Transferring time has been greatly shortened from that of the EOS 5D, so your workflow is sped up as well. Various options can also be chosen so you only transfer the images you want. A **HDMI mini output terminal** has been included on the EOS 5D Mark II, allowing you to view your images and video clips in Full HD quality on high-resolution HD displays. When connected to a TV equipped with an HDMI port, the output resolution is automatically set to match the connected TV. For standard definition TV displays, the **Audio/Video OUT terminal** can be used instead.

As the camera supports the **PictBridge printing standard**, you can print out your images without a computer. Advanced PictBridge features such as tilt correction, trimming, contact sheet printing and much more are also available to you.



Extend your creative possibilities.

While the EOS 5D Mark II is already an exceptional performer by itself, a wide range of accessories can help to greatly extend the functionality of the camera. First up is the new **LP-E6 lithium-ion battery pack**. With this new 1800 mAh battery, you can check the remaining capacity (in 1% increments), shutter count, and recharge performance on the camera's [Battery info.] screen.



For easier vertical shooting, there's the new **BG-E6 battery grip**. Developed especially for use with the EOS 5D Mark II, it can house one or two LP-E6 battery packs, or six size-AA alkaline batteries when used with the **BGM-E6 battery magazine**.



For a workflow that's free from wires, the **WFT-E4 wireless file transmitter** is what you need. Doubling up as a vertical grip, it has a wireless/wired LAN feature and USB host feature that allows an external recording media or a GPS device can be connected to it.



To achieve superior flash performance, Canon's exclusive **EX-series Speedlite flashes** are available for use with the EOS 5D Mark II. When using the 580EX II or 430EX II, flash settings can be made directly from the camera's LCD screen.

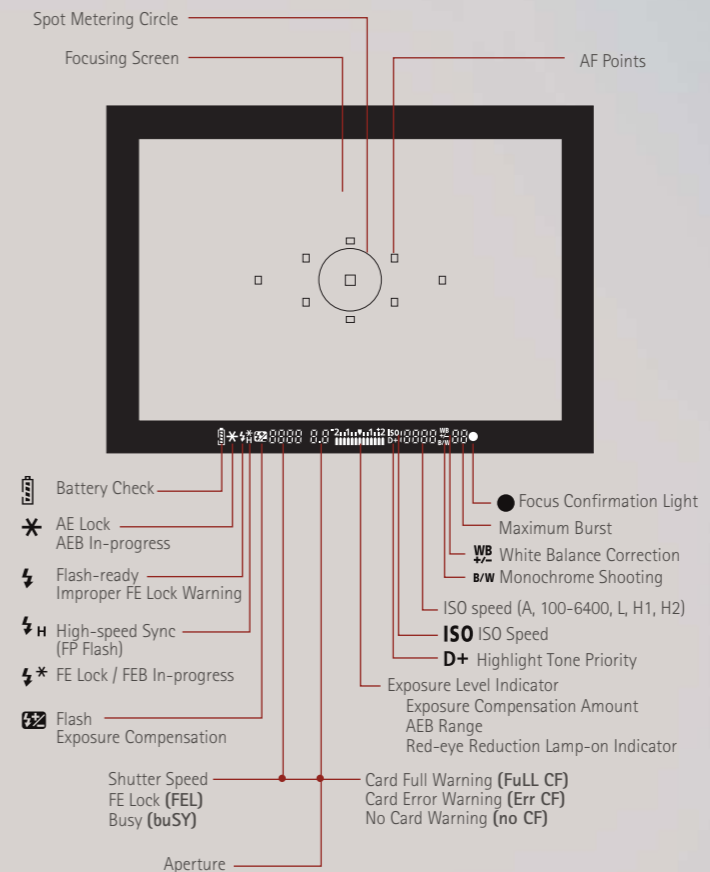
Let's not forget that with the EOS 5D Mark II, you get full access to the expansive range of high-quality **Canon EF lenses**. Numbering over 60 different lenses for every possible imaging need, no other camera system even comes close. With the EOS 5D Mark II, what you have is a complete and comprehensive DSLR experience that gives you everything you need to accomplish all your photography goals.



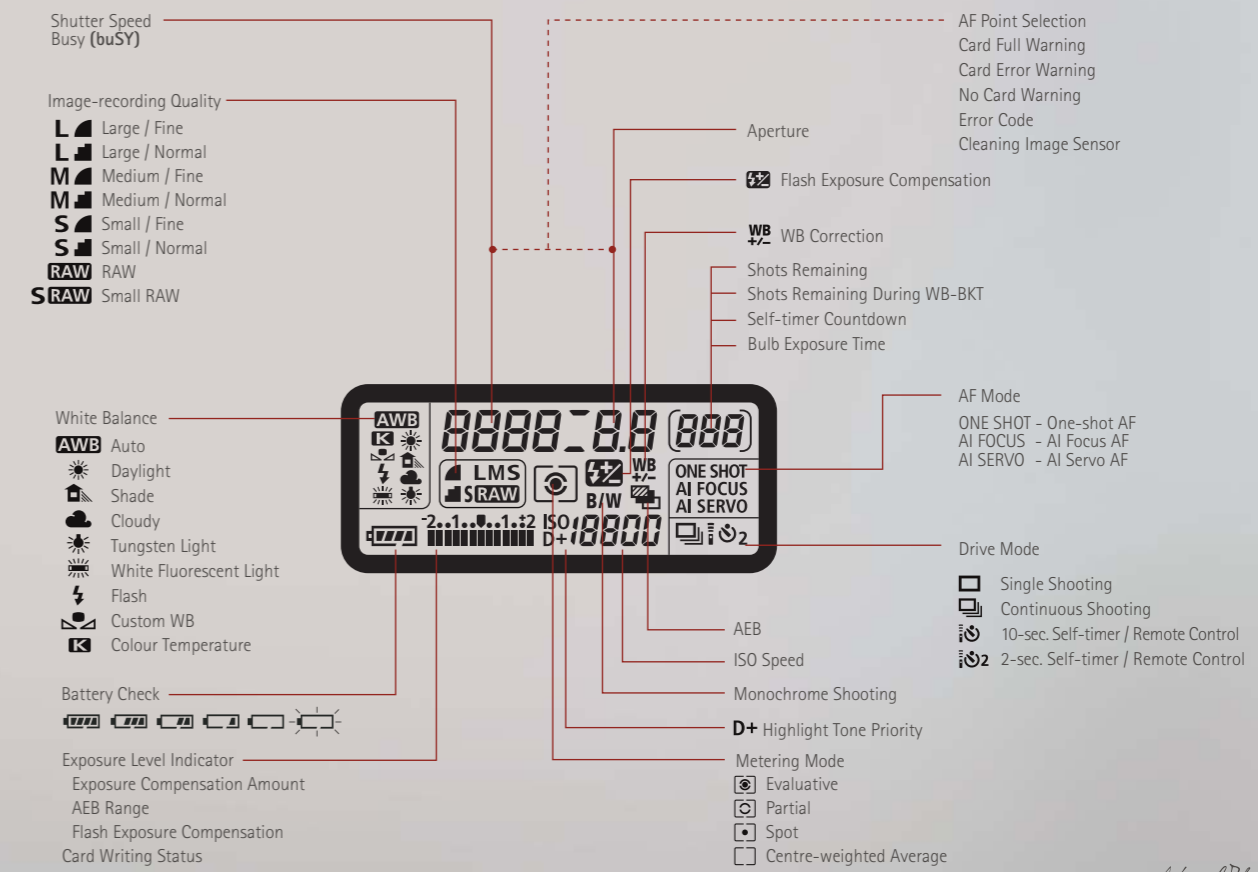
Nomenclature



Viewfinder Information



LCD Panel Information

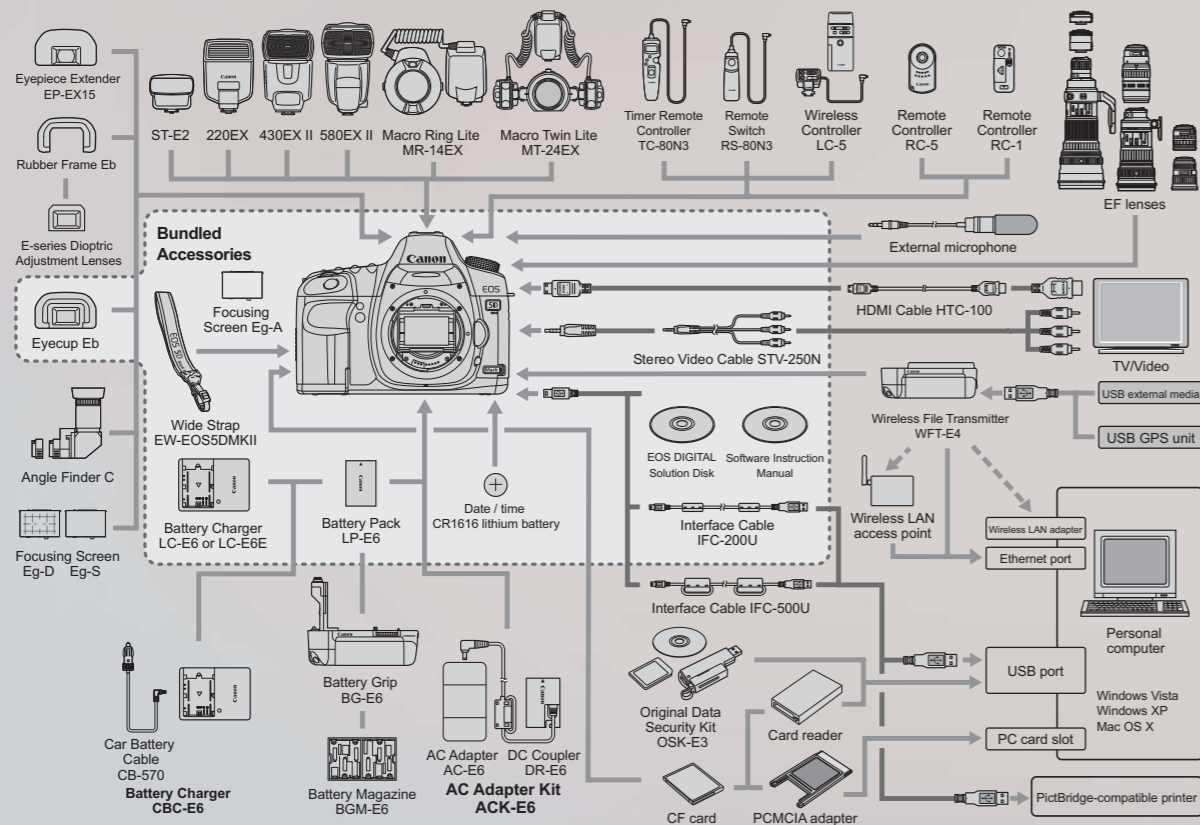


Bundled Applications

EOS DIGITAL SOLUTION DISK VER.19.1

| | Windows | | Macintosh | |
|--|---------|-----------------------------|-----------|-----------------------------|
| | Version | Supported Operating Systems | Version | Supported Operating Systems |
| Zoom Browser EX / Image Browser | 6.2 | 2000 / XP / Vista | 6.2 | 10.5 |
| Digital Photo Professional | 3.5 | | 3.5 | |
| EOS Utility | 2.5 | | 2.5 | |
| WFT Utility | 3.2 | | 3.2 | |
| Original Data Security Utility Original Data Security Administrator | 1.5 | | - | |
| Picture Style Editor | 1.4 | | 1.4 | |
| Photo Stitch | 3.1 | | 3.2 | |
| Memory Card Utility | 1.2 | | 1.2 | |

System Chart



Custom Functions

C.Fn I: Exposure

1. Exposure level increments
2. ISO speed setting increments
3. ISO expansion
4. Bracketing auto cancel
5. Bracketing sequence
6. Safety shift
7. Flash sync. speed in Av mode

C.Fn II: Image

1. Long exp. noise reduction
2. High ISO speed noise reduction
3. Highlight tone priority
4. Auto Lighting Optimizer

C.Fn III: Autofocus/Drive

1. Lens drive when AF impossible
2. Lens AF stop button function
3. AF point selection method
4. Superimposed display
5. AF-assist beam firing
6. Mirror lockup
7. AF point area expansion
8. AF Microadjustment

C.Fn IV: Operation/Others

1. Shutter button/AF-ON button
2. AF-ON/AE lock button switch
3. Assign SET button
4. Dial direction during Tv/Av
5. Focusing Screen
6. Add original decision data

Specifications

| | | | | | |
|-------------------------|--|---------------------------|--|------------------------------|---|
| Type | Type: Digital, single-lens reflex, AF/AE camera Recording medium: Type I or II CF card, UDMA-compatible Compatible lenses: Canon EF lenses (The effective lens focal length is the same as indicated on the lens) Lens mount: Canon EF mount | Exposure Control | Metering modes: 35-zone TTL full-aperture metering • Evaluative metering (linkable to any AF point) • Partial metering (approx. 8% of viewfinder at center) • Spot metering (approx. 3.5% of viewfinder at center) • Center-weighted average metering Metering range: EV 1 - 20 (at 23°C/73°F with EF50mm f/1.4 USM lens, ISO 100) Exposure control: Program AE (Full Auto, Creative Auto, Program), shutter-priority AE, aperture-priority AE, manual exposure, bulb exposure ISO speed: Full Auto, Creative Auto: ISO 100 - 3200 set (Recommended exposure index) Exposure compensation: Manual and AEB (Settable in combination with manual exposure compensation) AE lock: Auto: Applied in One-Shot AF mode with evaluative metering when focus is achieved Manual: By AE lock button | LCD Monitor | Type: TFT color liquid-crystal monitor Monitor size and dots: 3-in. with approx. 920,000 dots (VGA) Coverage: Approx. 100% Brightness adjustment: Auto (Darker/Standard/Brighter), Manual (7 levels) Interface languages: 25 |
| Image Sensor | Type: CMOS sensor Effective Pixels: Approx. 21.10 megapixels Image sensor size: Approx. 36 x 24 mm Aspect ratio: 3:2 Dust delete feature: Auto, Manual, Dust Delete Data appending | Image Playback | Image display formats: Single, Single + Info (Image-recording quality, shooting information, histogram) 4-image index, 9-image index, image rotate possible Zoom magnification: Approx. 1.5x - 10x Image browsing methods: Single image, jump by 10 or 100 images, jump by screen, by shooting date, by folder, by movie, by stills Highlight alert: Overexposed highlights blink Movie playback: Enabled (LCD monitor, video/audio OUT, HDMI OUT) Built-in speaker | Direct Printing | Compatible printers: PictBridge-compatible printers Printable images: JPEG and RAW images Print ordering: DPOF Version 1.1 compatible |
| Recording System | Recording format: Design rule for Camera File System 2.0 Image type: JPEG, RAW (14-bit Canon original) RAW + JPEG simultaneous recording possible Recorded pixels: (1) Large: Approx. 21.00 megapixels (5616 x 3744) (2) Medium: Approx. 11.10 megapixels (4080 x 2720) (3) Small: Approx. 5.20 megapixels (2784 x 1856) (4) RAW: Approx. 21.00 megapixels (5616 x 3744) (5) sRAW1: Approx. 10.00 megapixels (3861 x 2574) (6) sRAW2: Approx. 5.20 megapixels (2784 x 1856) Create/select a folder: Possible | Shutter | Type: Electronically-controlled, focal-plane shutter Shutter speeds: 1/8000 sec. to 30 sec., bulb (Total shutter speed range. Available range varies by shooting mode.) X-sync at 1/200 sec. | Customization | Custom Functions: 25 Camera user settings: Register under Mode Dial's C1, C2, and C3 positions My Menu registration: Provided |
| Image Processing | Picture Style: Standard, Portrait, Landscape, Neutral, Faithful, Monochrome, User Def. 1 - 3 White balance: Auto, Preset (Daylight, Shade, Cloudy, Tungsten light, White fluorescent light, Flash), Custom, Color temperature setting (2500-10000K) White balance correction and white balance bracketing features provided • Color temperature information transmission enabled Noise reduction: Applicable to long exposures and high ISO speed shots Automatic image brightness correction: Auto Lighting Optimizer Highlight tone priority: Provided Lens peripheral illumination correction: Provided | Drive System | Drive modes: Single shooting, continuous shooting, 10-sec. self-timer/remote control, 2-sec. self-timer/remote control Continuous shooting speed: Max. approx. 3.9 shots/sec. Max. burst: JPEG Large/Fine: Approx. 78 shots (Approx. 310 shots), RAW: Approx. 13 shots (Approx. 14 shots), RAW + JPEG Large/Fine: Approx. 8 shots (Approx. 8 shots) *Figures are based on Canon's testing standards (ISO 100 and Standard Picture Style) using a 2GB card. *Figures in parentheses apply to an Ultra DMA (UDMA) 2GB card based on Canon's testing standard. | Interface | Digital terminal: For personal computer communication and direct printing (Hi-Speed USB) Audio/video output terminal: 3.5mm dia. stereo mini jack (NTSC/PAL selectable) HDMI mini OUT terminal: Type C (Auto switching of resolution) External microphone input terminal: 3.5mm dia. stereo mini jack Remote control terminal: Compatible with remote control via N3 Type Wireless remote control: With Remote Controller RC-1/RC-5 Extension system terminal: For connection to Wireless File Transmitter WFT-E4 |
| Viewfinder | Type: Eye-level pentaprism Coverage: Vertical/Horizontal approx. 98% Magnification: 0.7x (50mm lens at infinity) Eye point: 18mm (lens center at -1 m ⁻¹) Built-in dioptic adjustment: interchangeable (2 types sold separately), screen provided Focusing screen: y image-r Mirror: ed Depth-of-field preview: y image-r | External Speedlite | Compatible flash: EX-series Speedlites Flash metering: E-TTL II auto/flash Flash exposure compensation: ±2 stops in 1/3- or 1/2-stop increments FE lock: Provided PC terminal: Provided | Power Source | Battery: Battery Pack LP-E6 (Qty. 1) *AC power can be supplied via AC Adapter Kit ACK-E6 *With Battery Grip BG-E6 attached, size AA/LR6 batteries can be used Battery information: Remaining capacity, Shutter count, and Recharge performance displayed Battery life: With viewfinder shooting: At 23°C/73°F, approx. 850 shots. At 0°C/32°F, approx. 750 shots. With Live View shooting: At 23°C/73°F, approx. 200 shots. At 0°C/32°F, approx. 180 shots. |
| Autofocus | Type: Contrast, phase detection AF points: 9 Metering range: 0°F, ISO 100 Focus modes: One-Shot AF, AI Focus AF, Manual focusing AF-assist beam: Enabled external Speedlite AF Microadjustment: Available | Live View Shooting | Shooting modes: Still photo shooting and movie shooting Focusing: Quick mode (Phase-difference detection) Live mode, Live face detection mode (Contrast detection) Manual focusing (5x/10x magnification possible) Metering modes: Evaluative metering with the image sensor (still photos) / Center-weighted average metering (movies) Metering range: EV 0 - 20 (at 23°C/73°F with EF50mm f/1.4 USM lens, ISO 100) Silent shooting: Provided (Still photo shooting) Movie: MOV (Video: H.264, Audio: Linear PCM) Recording size: 1920x1080 (Full HD), 640x480 (SD) Continuous movie shooting time: Full HD approx. 12 min. SD approx. 24 min. | Dimensions and Weight | Dimensions (W x H x D): 152 x 113.5 x 75 mm / 6.0 x 4.5 x 3.0 in. Weight: Approx. 810 g / 28.6 oz. (body only) |
| | | | | Operation Environment | Working temperature range: 0°C - 40°C / 32°F - 104°F Working humidity: 85% or less |

*All specifications above are based on Canon's testing standards.
*The camera's specifications and exterior are subject to change without notice.
*If a problem occurs with a non-Canon lens attached to the camera, consult the respective lens maker.

Warning: Unauthorized recording of copyrighted materials may infringe on the rights of copyright owners and be contrary to copyright laws.

Errors and omission excepted. Weight and dimensions are approximate. Subject to change without notice. Microsoft are either registered trademarks or trademarks of Microsoft Corporation in the United States and/or other countries. Other names and products not mentioned above may be registered trademarks or trademarks of their respective companies. Canon is a registered trademark of Canon Inc.

